

Detail No.: **51.90**
 Date: **March 2021**
 Page: **1 of 3**

Notes:

1. StoPanel® Mineral ci is a prefabricated exterior wall panel with noncombustible continuous insulation, continuous air and moisture barrier, and can be finished with a wide variety of standard and specialty Sto textured finish options.
2. Owens Corning Thermafiber™ CI-C SC18 Mineral Wool Insulation (3" - 4")
3. Vertical ribbons to provide channels for drainage.
4. 2-3/8" inch diameter (60mm) Sto Thermo Dowel with 1/4" (6 mm) corrosion resistant star head type screw fastener. Refer to page 3 for Sto Thermo Cap Wool.
5. Consult with Sto Corp. Technical Dept. for additional information about supplemental fastener rings for increased wind-load performance.

ATTENTION

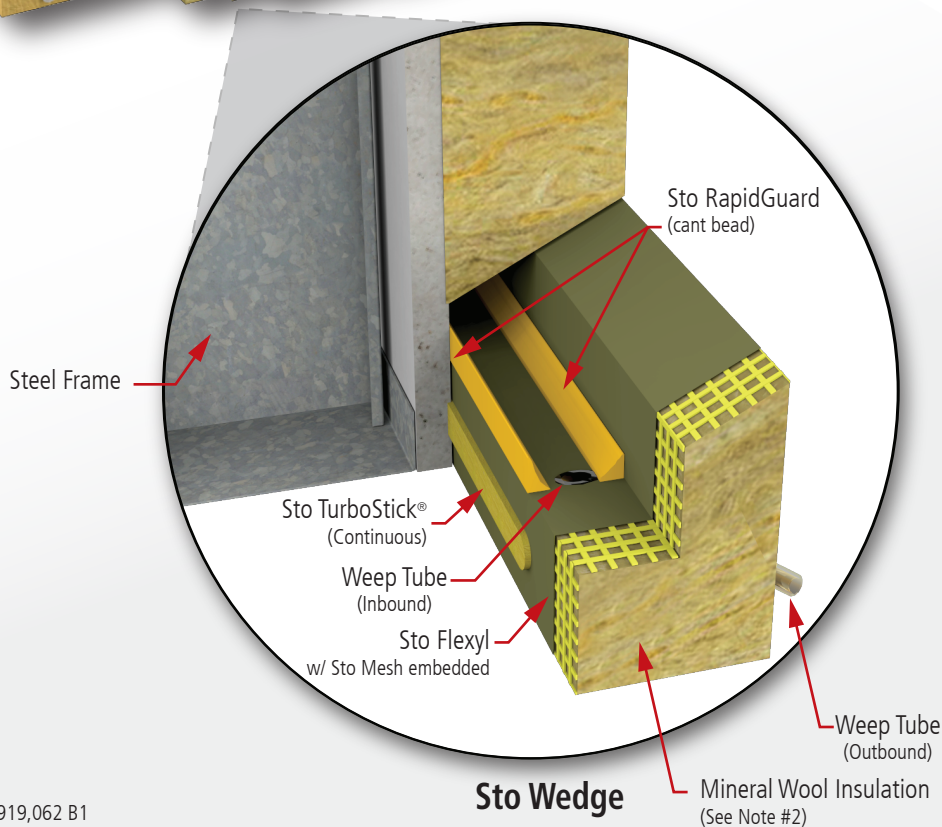
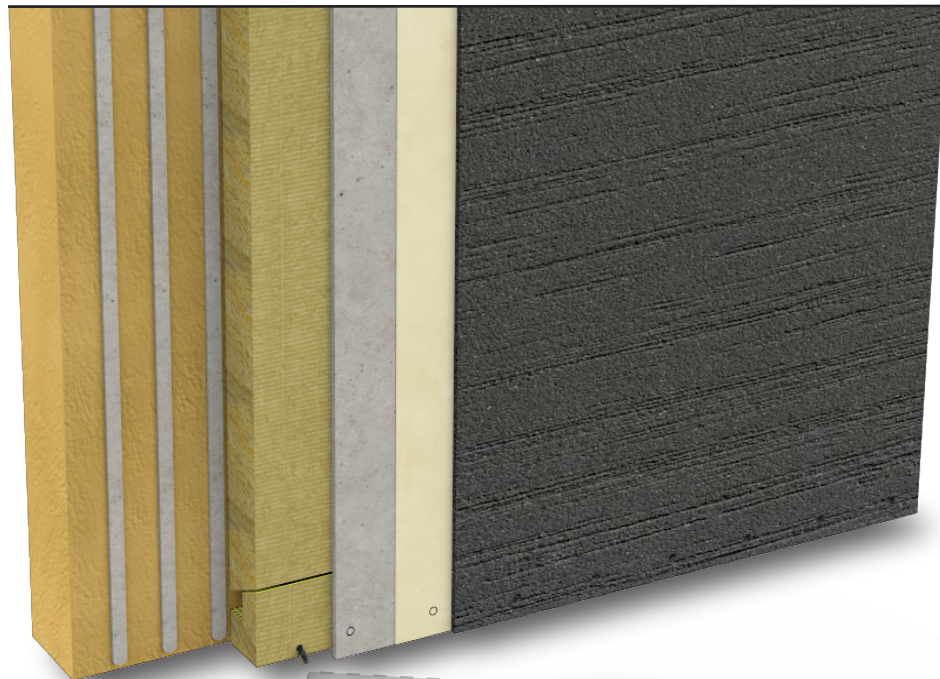
Property of Sto Corp. All Rights Reserved.

Sto products are intended for use by qualified professional contractors, not consumers, as a component of a larger construction assembly as specified by a qualified design professional, general contractor or builder. They should be installed in accordance with those specifications and Sto's instructions. Sto Corp. disclaims all, and assumes no, liability for on-site inspections, for its products applied improperly, or by unqualified persons or entities, or as part of an improperly designed or constructed building, for the nonperformance of adjacent building components or assemblies, or for other construction activities beyond Sto's control. Improper use of Sto products or use as part of an improperly designed or constructed larger assembly or building may result in serious damage to Sto products, and to the structure of the building or its components.

STO CORP. DISCLAIMS ALL WARRANTIES EXPRESSED OR IMPLIED EXCEPT FOR EXPLICIT LIMITED WRITTEN WARRANTIES ISSUED TO AND ACCEPTED BY BUILDING OWNERS IN ACCORDANCE WITH STO'S WARRANTY PROGRAMS WHICH ARE SUBJECT TO CHANGE FROM TIME TO TIME. For the fullest, most current information on proper application, clean-up, mixing and other specifications and warranties, cautions and disclaimers, please refer to the Sto Corp. website, www.stocorp.com.

www.stopanel.com





U.S. Patent No.8,919,062 B1

Detail No.: **51.90**
Date: **March 2021**
Page: **2 of 3**

Notes:

1. StoPanel® Mineral ci is a prefabricated exterior wall panel with noncombustible continuous insulation, continuous air and moisture barrier, and can be finished with a wide variety of standard and specialty Sto textured finish options.
2. Owens Corning Thermafiber™ CI-C SC18 Mineral Wool Insulation (3" - 4")
3. Vertical ribbons to provide channels for drainage.
4. 2-3/8" inch diameter (60mm) Sto Thermo Dowel with 1/4" (6 mm) corrosion resistant star head type screw fastener. Refer to page 3 for Sto Thermo Cap Wool.
5. Consult with Sto Corp. Technical Dept. for additional information about supplemental fastener rings for increased wind-load performance.

ATTENTION

Property of Sto Corp. All Rights Reserved.

Sto products are intended for use by qualified professional contractors, not consumers, as a component of a larger construction assembly as specified by a qualified design professional, general contractor or builder. They should be installed in accordance with those specifications and Sto's instructions. Sto Corp. disclaims all, and assumes no, liability for on-site inspections, for its products applied improperly, or by unqualified persons or entities, or as part of an improperly designed or constructed building, for the nonperformance of adjacent building components or assemblies, or for other construction activities beyond Sto's control. Improper use of Sto products or use as part of an improperly designed or constructed larger assembly or building may result in serious damage to Sto products, and to the structure of the building or its components.

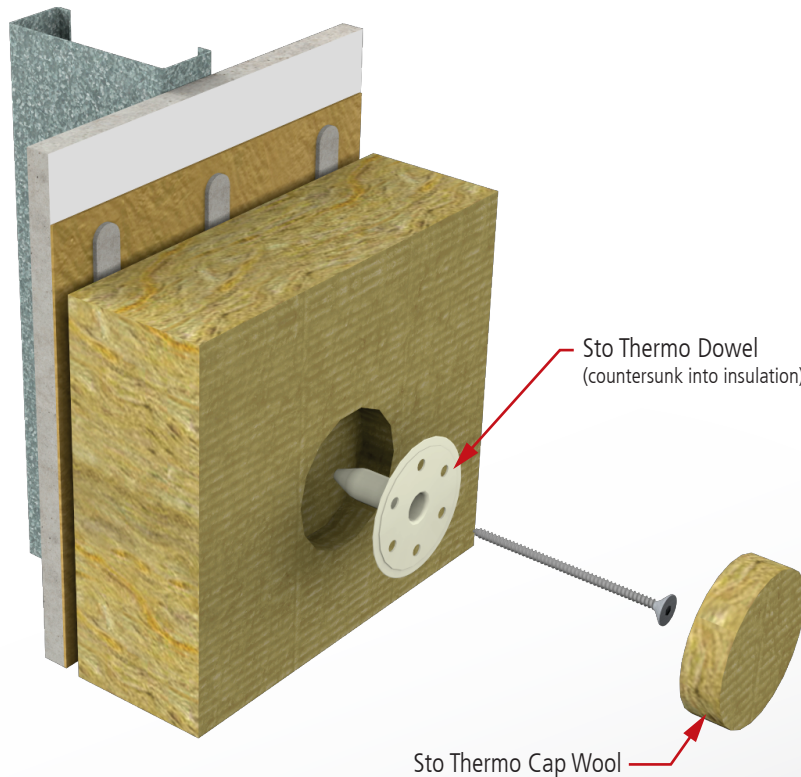
STO CORP. DISCLAIMS ALL WARRANTIES EXPRESSED OR IMPLIED EXCEPT FOR EXPLICIT LIMITED WRITTEN WARRANTIES ISSUED TO AND ACCEPTED BY BUILDING OWNERS IN ACCORDANCE WITH STO'S WARRANTY PROGRAMS WHICH ARE SUBJECT TO CHANGE FROM TIME TO TIME. For the fullest, most current information on proper application, clean-up, mixing and other specifications and warranties, cautions and disclaimers, please refer to the Sto Corp. website, www.stocorp.com.

www.stopanel.com



Mechanical Fastening

with Sto Thermo Dowel and Fastener



Sto Thermo Cap Wool

Sto Thermo Dowel
(countersunk into insulation)

Detail No.: **51.90**

Date: **March 2021**

Page: **3 of 3**

Notes:

1. StoPanel® Mineral ci is a prefabricated exterior wall panel with noncombustible continuous insulation, continuous air and moisture barrier, and can be finished with a wide variety of standard and specialty Sto textured finish options.
2. Owens Corning Thermafiber™ CI-C SC18 Mineral Wool Insulation (3" - 4")
3. Vertical ribbons to provide channels for drainage.
4. 2-3/8" inch diameter (60mm) Sto Thermo Dowel with 1/4" (6 mm) corrosion resistant star head type screw fastener and Sto Thermo Cap Wool to prevent thermal bridging.
5. Consult with Sto Corp. Technical Dept. for additional information about supplemental fastener rings for increased wind-load performance.

U.S. Patent No.8,919,062 B1

ATTENTION

Property of Sto Corp. All Rights Reserved.

Sto products are intended for use by qualified professional contractors, not consumers, as a component of a larger construction assembly as specified by a qualified design professional, general contractor or builder. They should be installed in accordance with those specifications and Sto's instructions. Sto Corp. disclaims all, and assumes no, liability for on-site inspections, for its products applied improperly, or by unqualified persons or entities, or as part of an improperly designed or constructed building, for the nonperformance of adjacent building components or assemblies, of for other construction activities beyond Sto's control. Improper use of Sto products or use as part of an improperly designed or constructed larger assembly or building may result in serious damage to Sto products, and to the structure of the building or its components.

STO CORP. DISCLAIMS ALL WARRANTIES EXPRESSED OR IMPLIED EXCEPT FOR EXPLICIT LIMITED WRITTEN WARRANTIES ISSUED TO AND ACCEPTED BY BUILDING OWNERS IN ACCORDANCE WITH STO'S WARRANTY PROGRAMS WHICH ARE SUBJECT TO CHANGE FROM TIME TO TIME.
For the fullest, most current information on proper application, clean-up, mixing and other specifications and warranties, cautions and disclaimers, please refer to the Sto Corp. website, www.stocorp.com.

www.stopanel.com

